

## b-mobile3G: QUICK START GUIDE High-speed Internet in three EASY steps

### Step ①

#### Easy! Activation

\* Your b-mobile3G phone number is printed on the side of the b-mobile box. Please note it below.

My b-mobile3G phone number is:

0	0										
---	---	--	--	--	--	--	--	--	--	--	--

1. Ring the Easy! Activation number provided below from a cellular or PHS phone.

**186-0120-915-886 (Freephone)**  
or 186-03-5677-1237

Follow the audio guidance and enter your b-mobile3G phone number.

That's it, you have completed Easy! Activation. Your b-mobile will activate within 15 minutes.

### Step ②

#### Install the b-Access connection tool

1. Insert the Setup CD in to your PC



The CD will automatically open your setup instructions. If it does not, please double-click the file "index.html" on the CD.

2. Follow the steps displayed on screen to install b-Access.

For detailed instructions on b-Access, please refer to the b-Access User Guide included on the Setup CD.

### Step ③

#### Plug in your b-mobile3G

Plug your b-mobile3G Connector in to your PC

It takes approximately three minutes for the PC to recognize the device the first time it is inserted.



Please install b-Access from the Setup CD before plugging in your b-mobile3G

#### One-click Internet

1. Double-click the b-Access icon on your desktop.

2. Click the "3G Access" button. You will automatically be connected to the Internet.

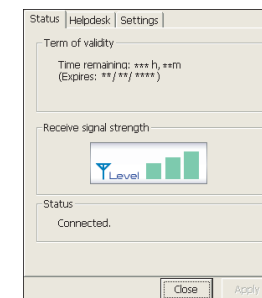


3. When you have finished, click "3G Access" again to disconnect.



#### Confirming your remaining time

To confirm how much time you have left on your b-mobile3G, click the "Setting" button in b-Access. Your remaining time is displayed under the "Status" tab.



<http://www.j-com.co.jp>

#### User Registration

To assist us in providing you with the best possible support, we ask that you complete User Registration.

<http://www.bmobile.ne.jp/support/login.html> (Japanese Only)

#### b-mobile Helpdesk: Unmatched support every step of the way

TEL: **03-5767-9111** (09:00-18:00 weekdays)

email: [helpdesk@j-com.co.jp](mailto:helpdesk@j-com.co.jp)